

Minnesota Native Plant Society



Schueler Wildlife Management Area Field Trip

- Where:** Schueler Wildlife Management Area
Located 1 mile north of Rushford, MN west of Highway 43
(see directions below)
- When:** Saturday May 4th, 2024 (10:00 a.m. to 5:00p.m.)
- Leader:** Michael Lee, Botanist with Minnesota Biological Survey

We will start the trip exploring a native bluff prairie community, break for lunch (perhaps with a scenic view atop the bluff) and finish in a rich mesic forest. The tour will include a rich diversity of spring ephemerals including snow trillium and squirrel corn, as well as rare ferns and sedges, on a large north-facing bluff along Rush Creek. We should also see early blooming prairie forbs and sedges including pasque flowers, bird's-foot violets, and jeweled shooting stars on large bluff prairies on the opposite side of the valley.

The Nature Conservancy protected three tracts of land for a total of 885 acres within the Root River landscape in Fillmore and Winona counties. The lands acquired include native and non-native grasslands, fire-dependent and mesic forests, and spring-fed coldwater streams, along with a small parcel of cropland which will be restored to prairie. Following completion of the restoration plans, this site was transferred to the Minnesota Department of Natural Resources and established as a Wildlife Management Area. This site was deemed a high priority area for conservation because of its coldwater tributaries, diverse bluff prairies, rich mesic forests, and numerous rare species occurrences.

Read more about Schueler WMA at [Schueler WMA: West Subunit | Minnesota DNR state.mn.us](https://www.dnr.state.mn.us)

- Agenda: 9:45-10:00** Gather at parking lot on north side of Fillmore County Highway 27
(maps with location coordinates on following pages)
- 10:00-5:00** Field trip with break for lunch

Items to Bring:

Lunch, water, snacks, hiking boots, hiking stick, hat, sunglasses, binoculars, tick/insect repellent, sunblock

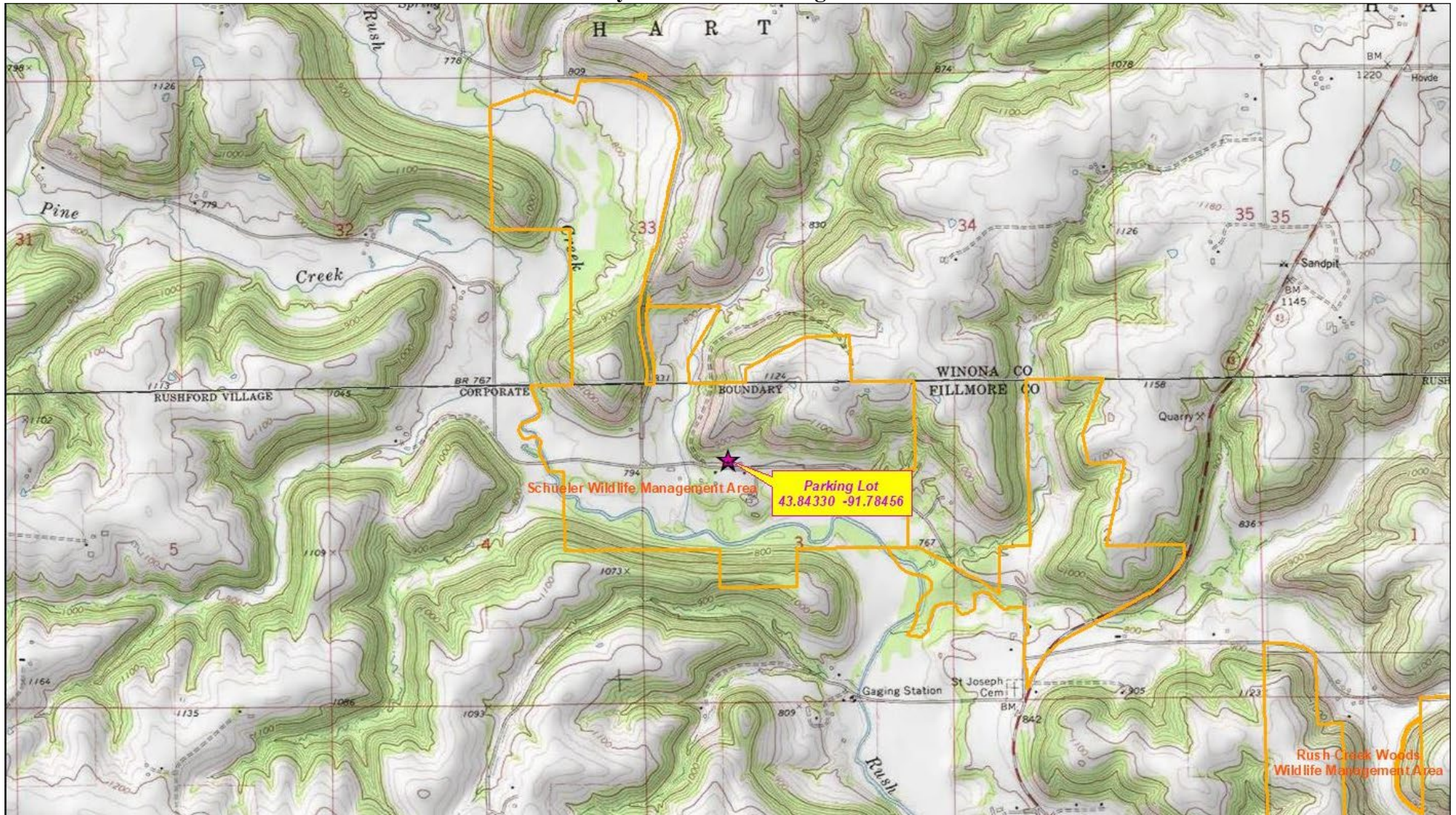
To register for this event please contact:

Event Coordinator: Jennifer Kamm. For more information, feel free to contact Jennifer at jennifer.kamm@stantec.com or 612-875-0543

Please register by April 27th

Schueler Wildlife Management Area Location

City of Rushford Village



Driving Directions from Minneapolis and St. Paul

← from Minneapolis, Minnesota
to City Of Rushford Village, Minnesota

2 hr 9 min (130 miles)

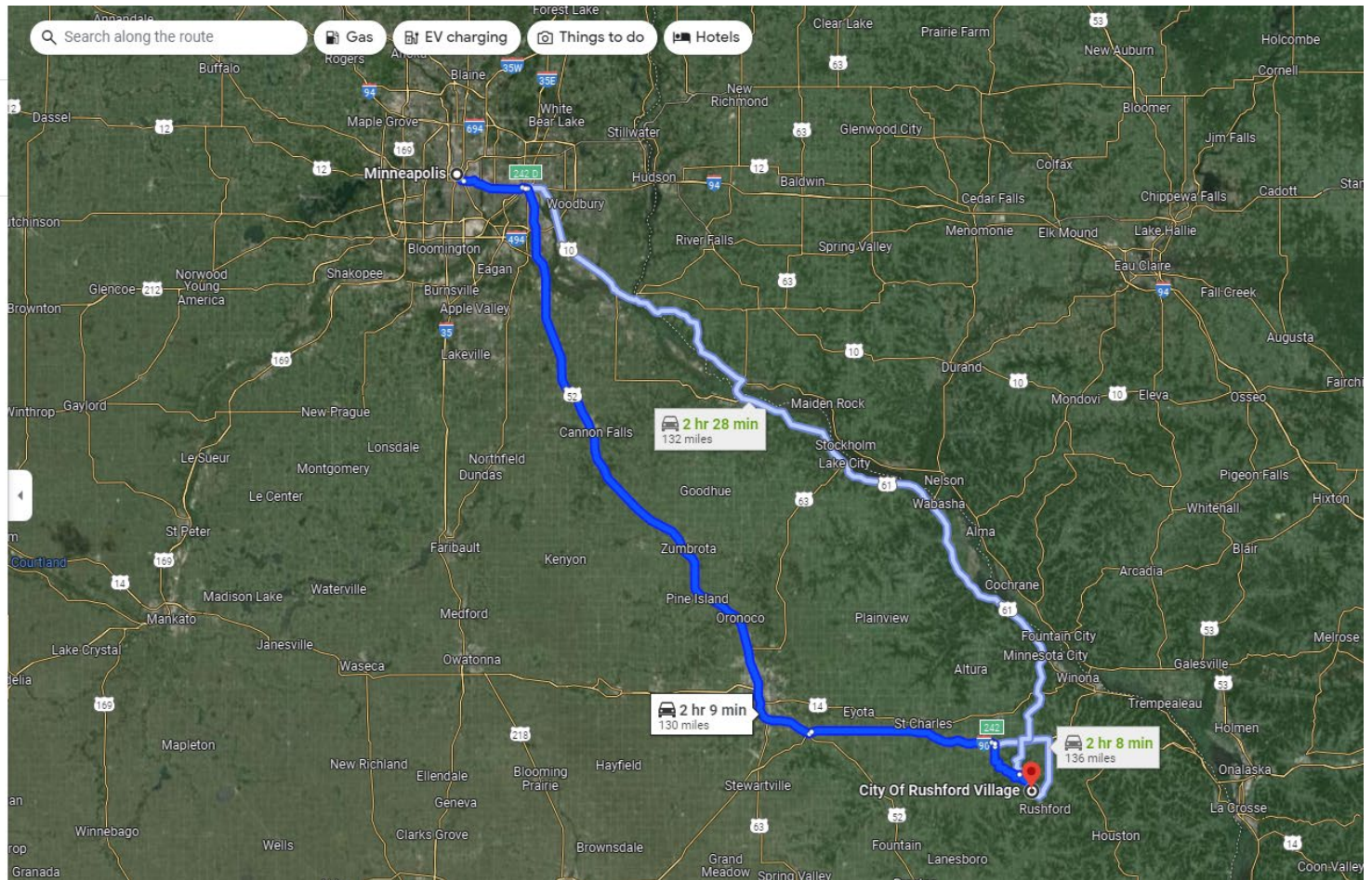
via US-52 S

Fastest route now due to traffic conditions

Minneapolis
Minnesota

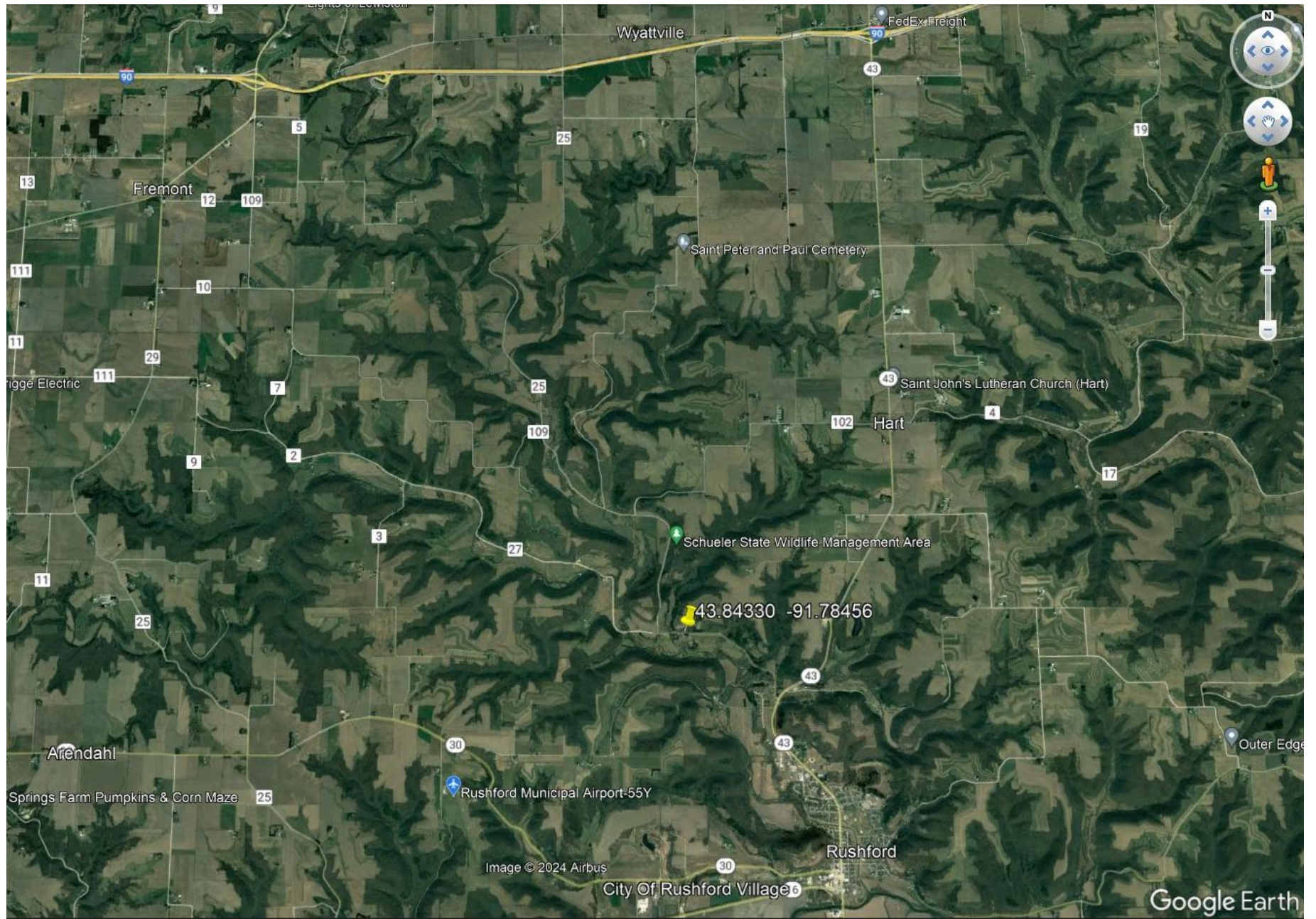
- > Get on I-94 E from South 6th St
4 min (1.4 mi)
- > Continue to Saint Paul. Take exit 242 D from I-94 E
9 min (8.7 mi)
- > Get on I-90 E in Marion Township
1 hr 17 min (85.1 mi)
- > Follow I-90 E to Co Rd 29 in Fremont Township.
Take exit 242 from I-90 E
21 min (24.1 mi)
- > Follow Co Rd 109 and Co Hwy 25 to Co Hwy 27 in
City Of Rushford Village
16 min (10.7 mi)

City Of Rushford Village
Minnesota



Click here for link to directions in Google Maps.: [Minneapolis, MN to City Of Rushford Village, Minnesota - Google Maps](#)

Vicinity Map



Schueler State Wildlife Management Area Parking location

