

Seminary Fen Scientific and Natural Area Volunteer Day

Help Remove Buckthorn Encroachment on Rare Plant Population

Where: Seminary Fen Scientific and Natural Area (see directions

When: below) Sunday April 14th, 2023 (8:00 a.m. to 12:00p.m.)

Leader: Jennifer Kamm

Please join your fellow MNNPS members in an effort to remove buckthorn that is encroaching on rare plant populations at Seminary Fen SNA. We will be cutting and treating the buckthorn and stacking the cuttings. We will have plenty of tools for everyone. We will meet at the parking area on the north side of Flying Cloud Drive and walk to our treatment area within the SNA on the north side of Flying Cloud Drive. We will grab a coffee when we finish.

Seminary Fen is located between the cities of Chaska and Chanhassen, just across the river from Shakopee. Seminary Fen is a calcareous fen within a larger wetland complex. Calcareous fens are a special type of wetland that can occur only at the base of slopes or bluffs, where cool, mineral-rich groundwater appears as springs. Water charged with minerals comes to the surface, then saturates and helps maintain thick layers of peat created by the decomposition of the plants that grow in the oxygen-poor water. Seminary Fen's groundwater drains into Assumption Creek. The cold, clear waters of the creek form one of the Twin Cities metro area's last surviving trout streams and flow from the fen to the Minnesota River just a mile away. A calcareous fen is Minnesota's rarest wetland type. Fewer than five hundred survive in the world and Seminary Fen is one of the last remaining fens of this quality. It is home to many threatened and endangered plant species.

Agenda: 8:00 Gather at parking lot on north side of Flying Cloud Drive.

8:00-12:00 Buckthorn removal in SNA

12:00 Join for coffee/donuts after.

This event is for members of the MN Native Plant Society only and will be limited to 20 registrants.

Items to Bring: Clean boots and, if desired, your own tools (we will have tools for use).

Be sure boots and tools are clean and weed free.

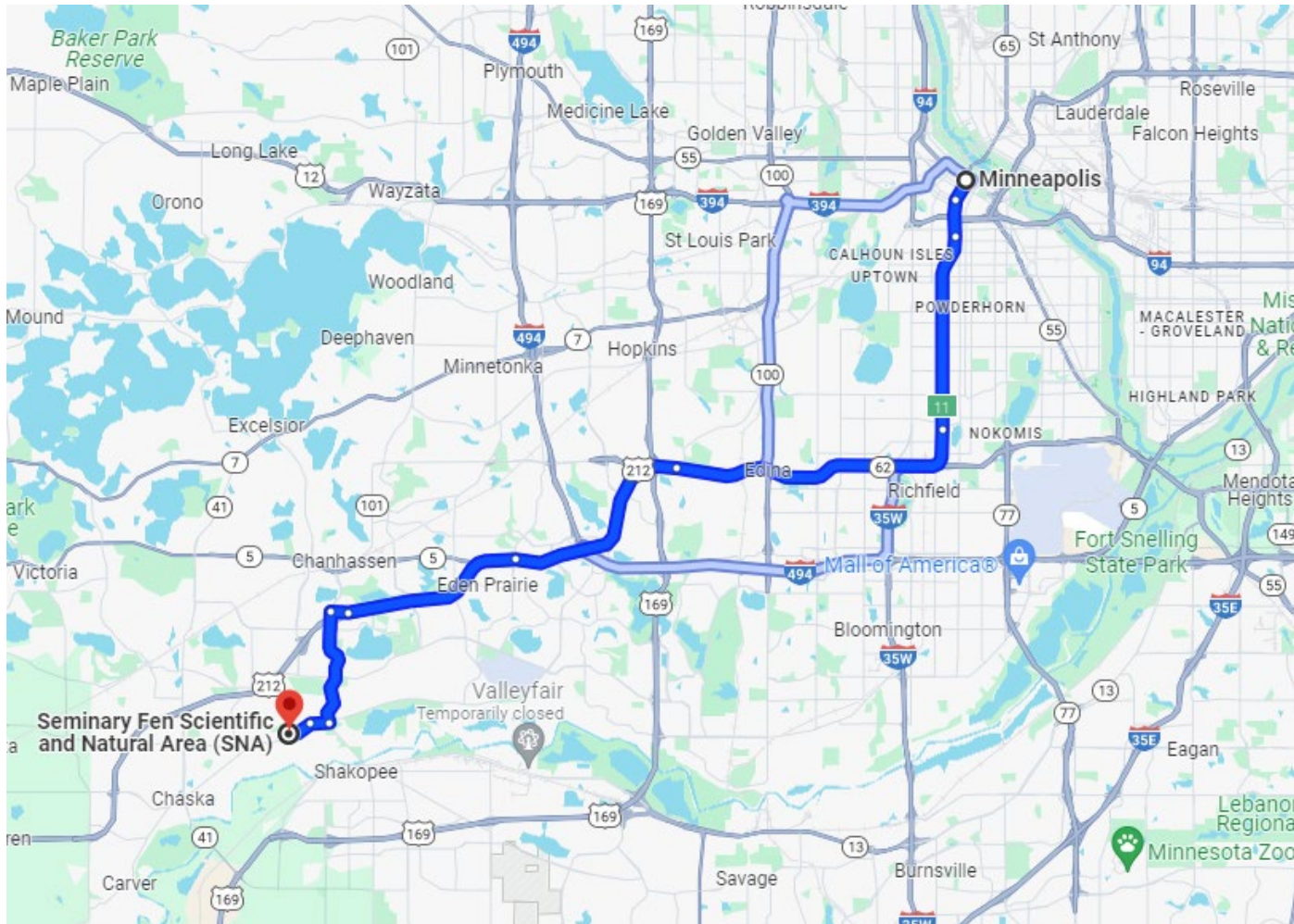
Work gloves, hat, safety glasses, clothes you don't mind working in buckthorn in - long sleeves and pants, warm winter wear if necessary.

To register for this event please contact:

Event Coordinator: Jennifer Kamm. For more information, feel free to contact Jennifer at jennifer.kamm@stantec.com or 612-875-0543

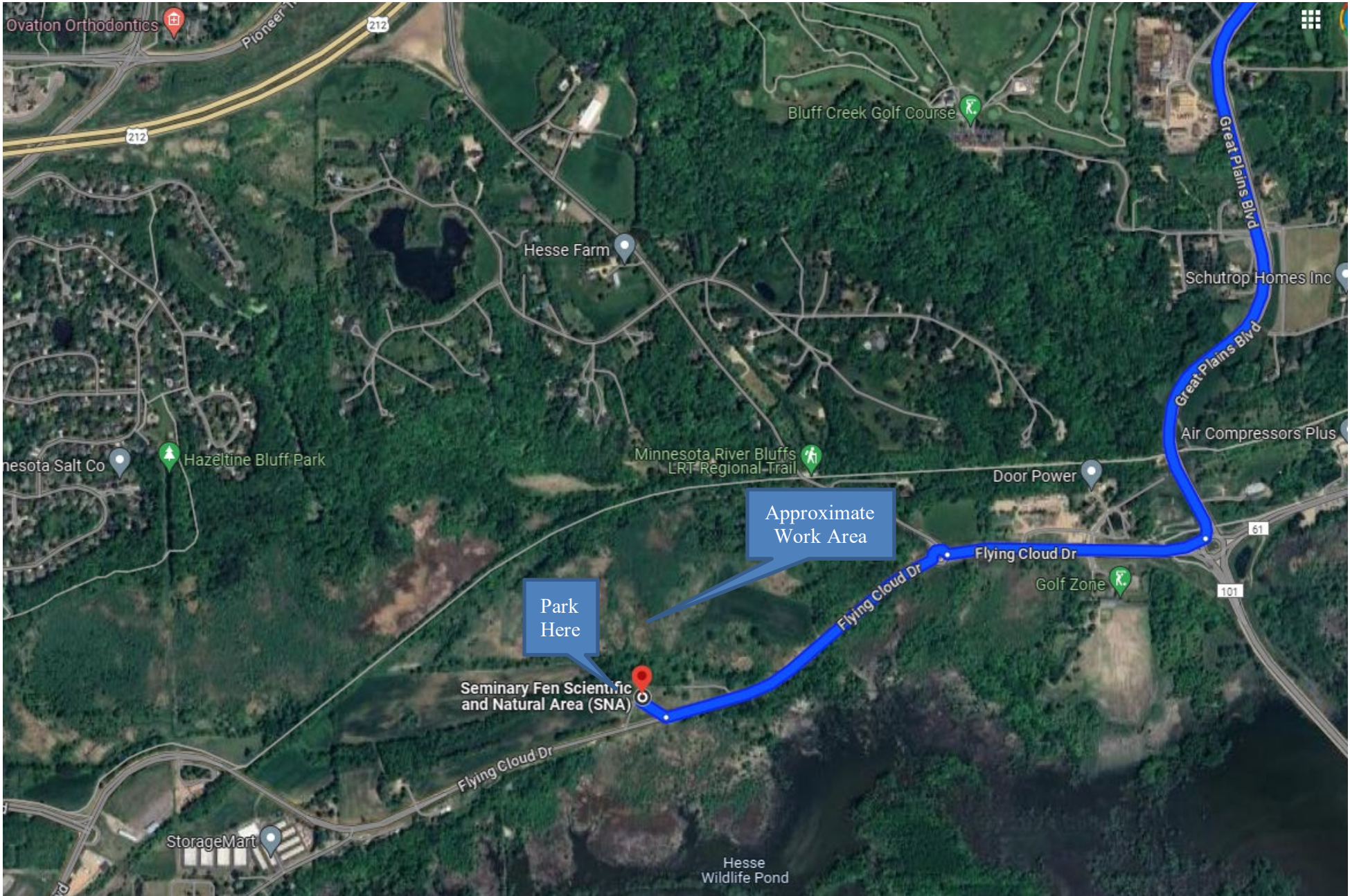
Please register by April 12th

Seminary Fen Scientific and Natural Area Location Chaska, MN 55318



Driving Directions from Minneapolis and St. Paul

Get on I-35W S- 4 min (1.3 mi); Follow I-35W S, MN-62 W and US-212 W to Great Plains Blvd in Chanhasen. Take the MN-101 exit from US-212 W - 19 min (19.5 mi). Follow Great Plains Blvd and Flying Cloud Dr to your destination 6 min (3.5 mi)



Park Here

Approximate Work Area

Seminary Fen Scientific and Natural Area (SNA)

Ovation Orthodontics

Bluff Creek Golf Course

Hesse Farm

Minnesota River Bluffs LRT Regional Trail

Door Power

Schutrop Homes Inc

Air Compressors Plus

Minnesota Salt Co

Hazeltine Bluff Park

Golf Zone

StorageMart

Hesse Wildlife Pond

212

212

61

101

Pioneer Tr

Great Plains Blvd

Flying Cloud Dr

Flying Cloud Dr

